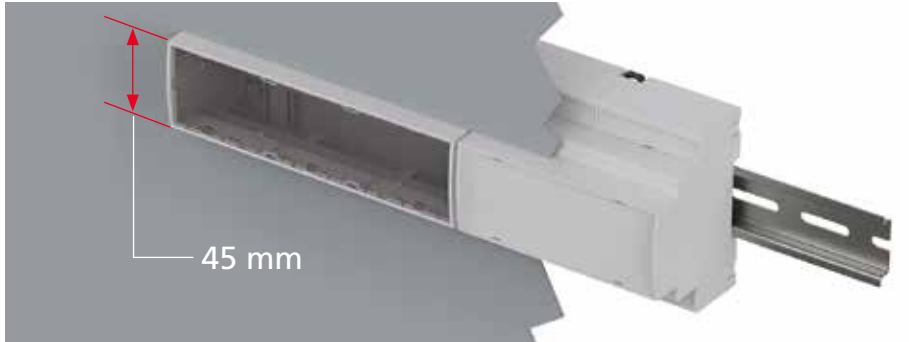
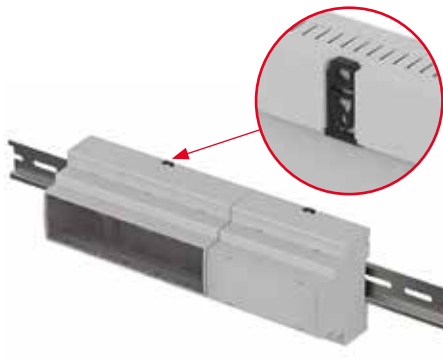


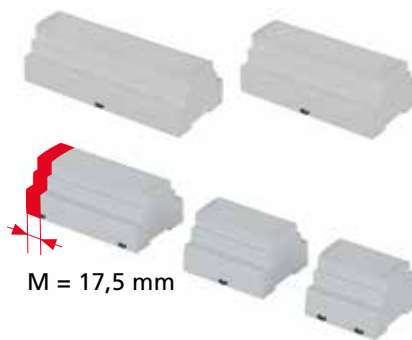
The product advantages



CombiNorm Control is a modular enclosure system for electronic devices with a form factor acc. to DIN 43880.



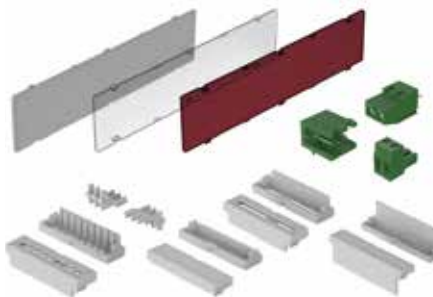
The integrated top hat rail mounting permits fast, efficient mounting on a TS35 top hat rail according to DIN EN 60715.



Enclosures in various module widths are available (5 HP/M, 6 HP/M, 8 HP/M, 9 HP/M, 10 HP/M, 12 HP/M).



The basic body consists of few individual components which snap together completely – no need for tools.



The enclosure can be adapted flexibly to the application by means of a wide range of terminals, front panels and covers.



Quick-Finder:
www.bopla.de/69



CombiNorm- Control



Colour:

● Light grey, similar to RAL 7035

Special colours on request

Protection class:

IP20 / DIN EN 60529;

Terminal blocks IP20 / DIN EN 60529

Material:

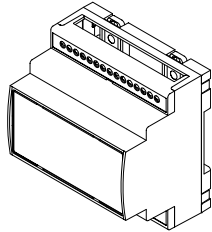
Enclosure: ABS flame retardant

For details see technical information.

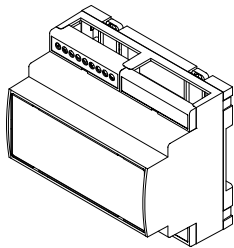


Enclosure sizes

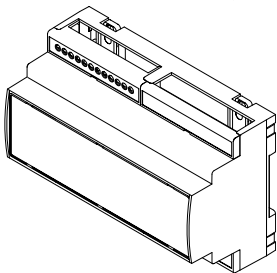
CNC 87.5



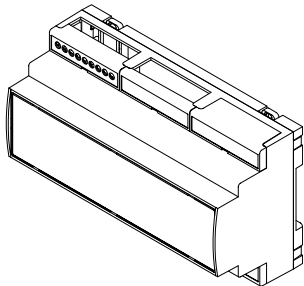
CNC 105.0



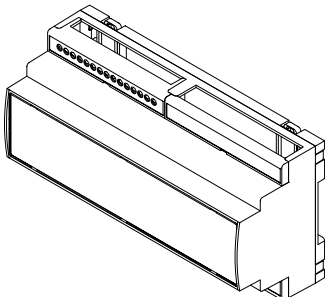
CNC 140.0



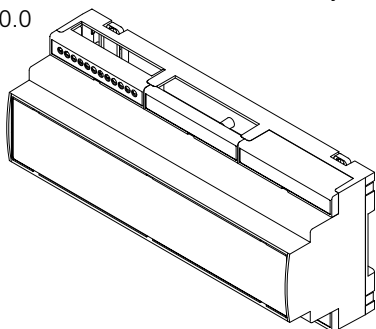
CNC 157.5



CNC 175.0

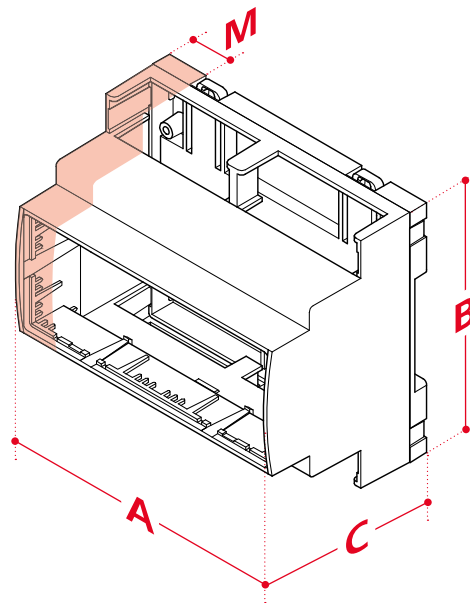


CNC 210.0



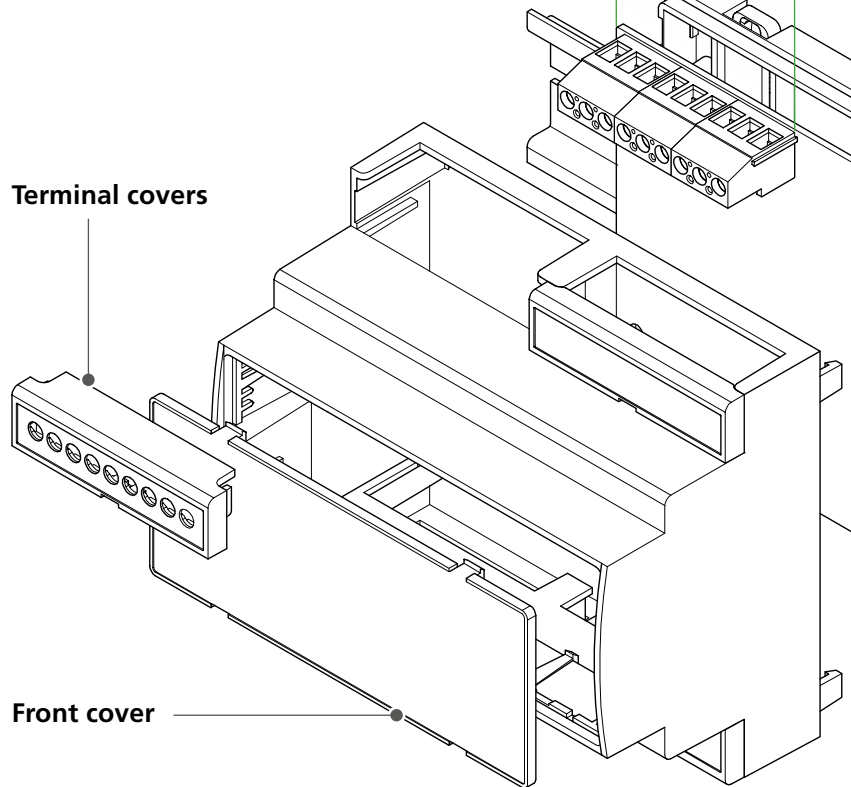
Design example

Enclosure



! Other sizes
in preparation

Terminal covers



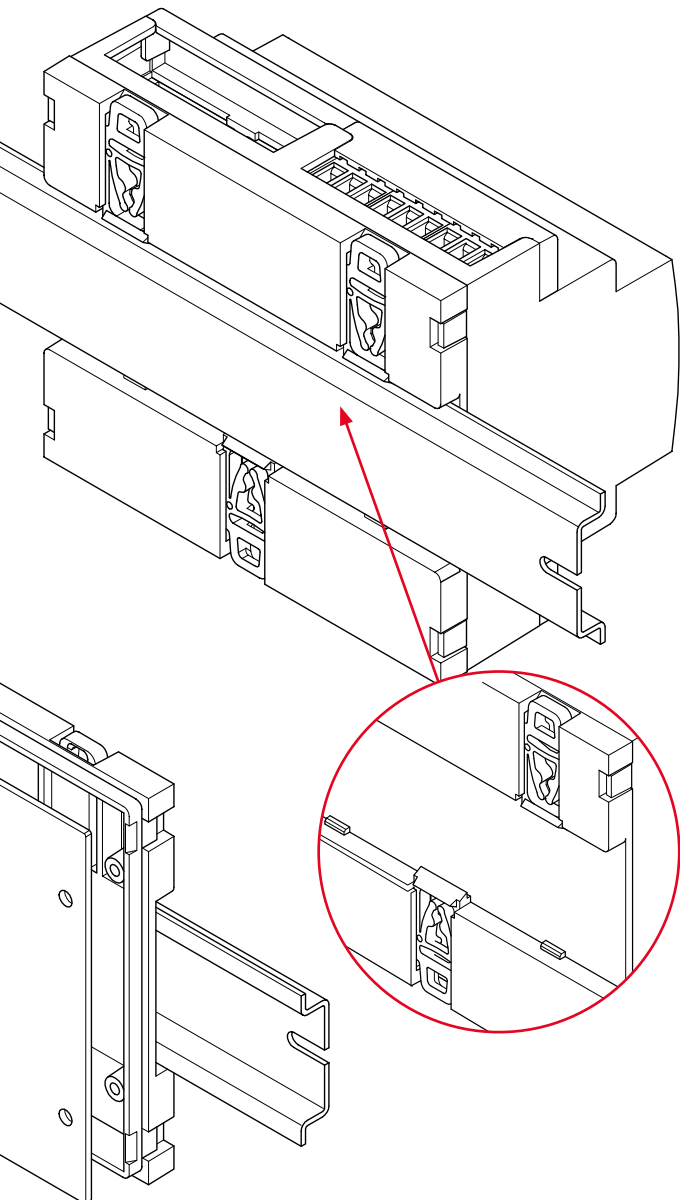
Front cover

CombiNorm- Control

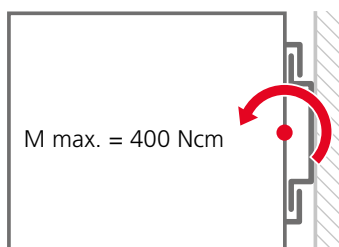


BOPLA

A Phoenix Mecano Company



Load capacity of DIN rail holder



Dimensions

Model	A	B	C	M	P
Enclosures					
CNC 87.5	89.2	89.8	65.2	5	30
CNC 105.0	107	89.8	65.2	6	36
CNC 140.0	159.8	89.8	65.2	8	48
CNC 157.5	159.8	89.8	65.2	9	54
CNC 175.0	177.8	89.8	65.2	10	60
CNC 210.0	213.8	89.8	65.2	12	72

M = Module width (HP)

P = maximum number of poles

Enclosure sets



Pre-defined sets are available for a fast project start.

Accessories



Terminal blocks



Front panels in light grey, crystal-clear or IR-permeable, red



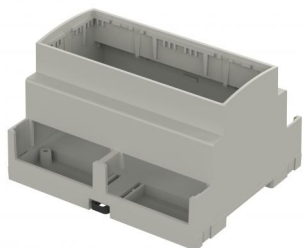
Terminal covers open on top, open in front, 5.08 grid or closed



Cover plug for terminal covers

CombiNorm-Control

Enclosure

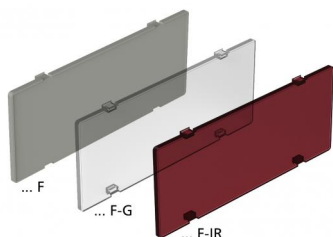


Enclosure

Model	Order no.	A	B	C	a1	Colour	Note
CNC 87.5	65610087	89.2	89.8	65.2	82.2	Light grey	5M; max. number of poles on the connection terminals: 30
CNC 105.0	65610105	107	89.8	65.2	99.5	Light grey	6M; max. number of poles on the connection terminals: 36
CNC 140.0	65610140	142.8	89.8	65.2	135.7	Light grey	8M; max. number of poles on the connection terminals: 48
CNC 157.5	65610157	159.8	89.8	65.2	152.7	Light grey	9M; max. number of poles on the connection terminals: 54
CNC 175.0	65610175	177.7	89.8	65.2	170.7	Light grey	10M; max. number of poles on the connection terminals: 60
CNC 210.0	65610210	213.8	89.8	65.2	206.8	Light grey	12M; max. number of poles on the connection terminals: 72

Scope Of Delivery: Enclosure, rear lid, top hat rail fixing

Notes: An enclosure cover must be fitted in order to achieve the protection class.



Front panel

Model	Order no.	Colour	Note
CNC 87.5 F	65621087	Light grey	For CNC 87.5, ABS flame-retardant
CNC 105.0 F	65621105	Light grey	For CNC 105.0, ABS flame-retardant
CNC 140.0 F	65621140	Light grey	For CNC 140.0, ABS flame-retardant
CNC 157.5 F	65621157	Light grey	For CNC 157.5, ABS flame-retardant
CNC 175.0 F	65621175	Light grey	For CNC 175.0, ABS flame-retardant
CNC 210.0 F	65621210	Light grey	For CNC 210.0, ABS flame-retardant
CNC 87.5 F-G	65622087	Crystal Clear	For CNC 87.5, ABS
CNC 105.0 F-G	65622105	Crystal Clear	For CNC 105.0, ABS
CNC 140.0 F-G	65622140	Crystal Clear	For CNC 140.0, ABS
CNC 157.5 F-G	65622157	Crystal Clear	For CNC 157.5, ABS
CNC 175.0 F-G	65622175	Crystal Clear	For CNC 175.0, ABS
CNC 210.0 F-G	65622210	Crystal Clear	For CNC 210.0, ABS
CNC 87.5 F-IR	65623087	IR-permeable red	For CNC 87.5, ABS
CNC 105.0 F-IR	65623105	IR-permeable red	For CNC 105.0, ABS
CNC 140.0 F-IR	65623140	IR-permeable red	For CNC 140.0, ABS
CNC 157.5 F-IR	65623157	IR-permeable red	For CNC 157.5, ABS
CNC 175.0 F-IR	65623175	IR-permeable red	For CNC 175.0, ABS
CNC 210.0 F-IR	65623210	IR-permeable red	For CNC 210.0, ABS

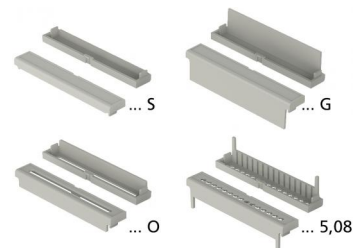
Scope Of Delivery: 1 piece

CombiNorm-Control

Enclosure

Terminal covers

Model	Order no.	Colour	Note
CNC KA 87.5-5,08	65635100	Light grey	Type: grid 5.08; for CNC 87.5 / 175.0
CNC KA 87.5-0	65635200	Light grey	Type: open on top; for CNC 87.5 / 175.0
CNC KA 87.5-S	65635300	Light grey	Type: open at the front; for CNC 87.5 / 175.0
CNC KA 87.5-G	65635400	Light grey	Type: closed; for CNC 87.5 / 175.0
CNC KA 52.5-5,08	65633100	Light grey	Type: grid 5.08; for CNC 105.0 / 157.5
CNC KA 52.5-0	65633200	Light grey	Type: open on top; for CNC 105.0 / 157.5
CNC KA 52.5-S	65633300	Light grey	Type: open at the front; for CNC 105.0 / 157.5
CNC KA 52.5-G	65633400	Light grey	Type: closed; for CNC 105.0 / 157.5
CNC KA 70.0-5,08	65634100	Light grey	Type: grid 5.08; for CNC 210.0
CNC KA 70.0-0	65634200	Light grey	Type: open at top; for CNC 210.0
CNC KA 70.0-S	65634300	Light grey	Type: open at front; for CNC 210.0
CNC KA 70.0-G	65634400	Light grey	Type: closed; for CNC 210.0



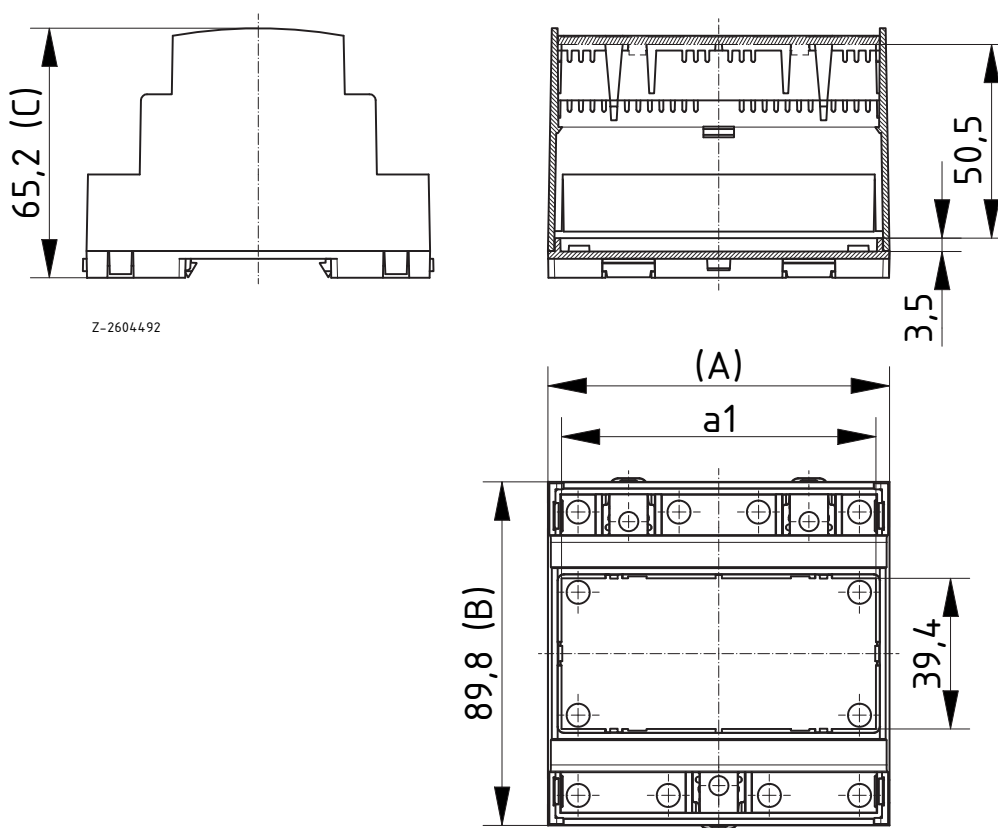
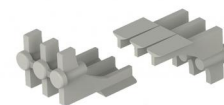
Scope Of Delivery: 4 pieces

Cover plugs

Model	Order no.	Colour	Note
CNC S-5,08	65640100	Light grey	For CNC KA 52.5 / 87.5-5.08

Scope Of Delivery: 20 pieces

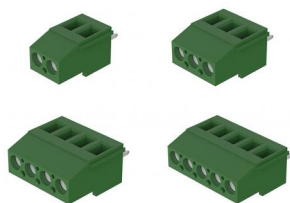
Notes: Please order terminal cover CNC KA ...-5.08 separately.



Z-2604492

CombiNorm-Control

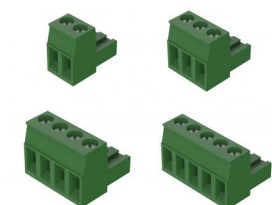
Terminals



Connection terminals AKZ 700

Model	Order no.	Note
AKZO 700/2 - 5,08 V	66002000.Z	2 poles, width 10.76 mm
AKZO 700/3 - 5,08 V	66003000.Z	3 poles, width 15.84 mm
AKZO 700/4 - 5,08 V	66004000.Z	4 poles, width 20.92 mm
AKZO 700/5 - 5,08 V	66005000.Z	5 poles, width 26.00 mm

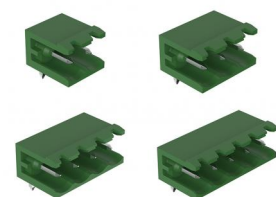
Scope Of Delivery: 1 piece



Connection terminals AKZ 950

Model	Order no.	Note
AKZ 950/2 - 5,08 V	66002600.Z	2 poles, width 10.16 mm
AKZ 950/3 - 5,08 V	66003600.Z	3 poles, width 15.24 mm
AKZ 950/4 - 5,08 V	66004600.Z	4 poles, width 20.32 mm
AKZ 950/5 - 5,08 V	66005600.Z	5 poles, width 25.40 mm

Scope Of Delivery: 1 piece



Connection terminals STLZ 950

Model	Order no.	Note
STLZ 950/2 - 5,08 H	66002500.Z	2 poles, width 10.16 mm
STLZ 950/3 - 5,08 H	66003500.Z	3 poles, width 15.24 mm
STLZ 950/4 - 5,08 H	66004500.Z	4 poles, width 20.32 mm
STLZ 950/5 - 5,08 H	66005500.Z	5 poles, width 25.40 mm

Scope Of Delivery: 1 piece

CombiNorm-Control

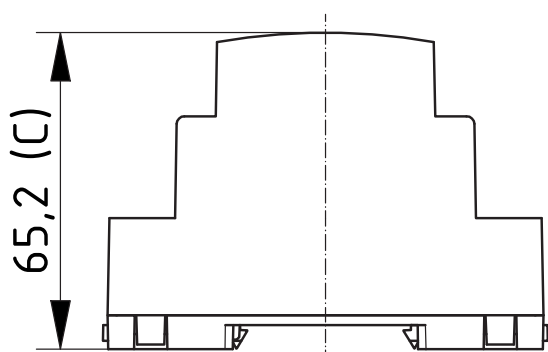
Sets



Sets

Model	Order no.	A	B	C	a1	Colour	Note
CNC 87.5 Set 1	65610087.S1	89.2	89.8	65.2	82.2	Light grey	5M; incl. 3 connection terminals AKZ 700/5
CNC 105.0 Set 1	65610105.S1	107	90	65.2	99.5	Light grey	6M; incl. 6 connection terminals AKZ 700/3
CNC 140.0 Set 1	65610140.S1	142.8	89.8	65.2	135.7	Light grey	8M; max. number of poles on the connection terminals: 48
CNC 157.5 Set 1	65610157.S1	159.8	89.8	65.3	152.7	Light grey	9M; incl. 9 connection terminals AKZ 700/3
CNC 175.0 Set 1	65610175.S1	177.8	89.8	65.3	170.7	Light grey	10M; incl. 6 connection terminals AKZ 700/5
CNC 210.0 Set 1	65610210.S1	213.8	89.8	65.3	206.8	Light grey	12M; incl. 9 connection terminals AKZ 700/4

Scope Of Delivery: Enclosure, front panel on top, terminal cover (5.08 grid), closed terminal cover, cover plugs 3-pole, connection terminals



Z-26044-92

