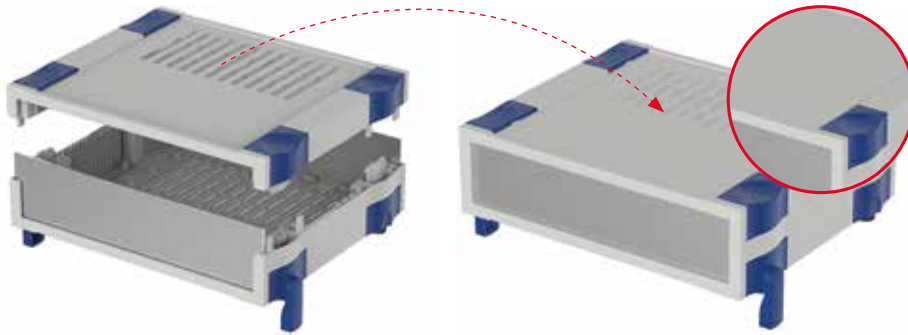
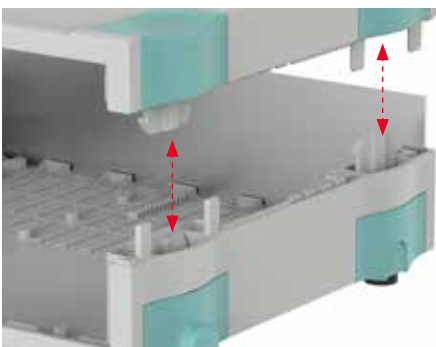


## The product advantages



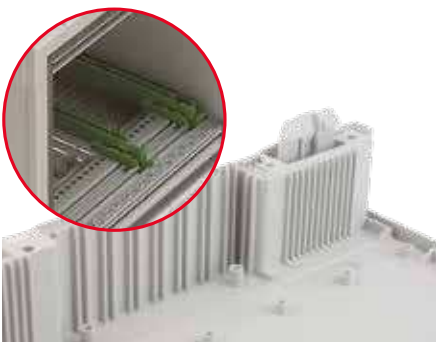
The desktop enclosure system consists of two plastic half shells and front panels made of different materials. Ventilation of the interior of the version fitted with air vents can be optimised by turning the half-shells against each other.



Sturdy snap-lock technology makes possible fast, toolless mounting. As an option, the half-shells can be screwed together.



The enclosure height (or width in vertical use) can be extended by using 45.72 mm grid extension sets (9 HP). Gradations of 15.24 mm (3 HP) can be achieved in connection with the two available basic heights.



Many slots for PCBs are available in the interior. Even the installation of complete 19" subracks is possible.



The snap locks are concealed with coloured caps. Additional design elements are also available. This allows individual design of the shape, colour and function of the enclosure.



**Quick-Finder:**  
[www.bopla.de/68](http://www.bopla.de/68)

## Examples of use





**BOPLA**

A Phoenix Mecano Company

# Botego



**Colour:**

● Light grey, similar to RAL 7035

Special colours on request

**Protection class:**

Closed: IP40 / DIN EN 60529

With ventilation slots: IP30 / DIN EN 60529

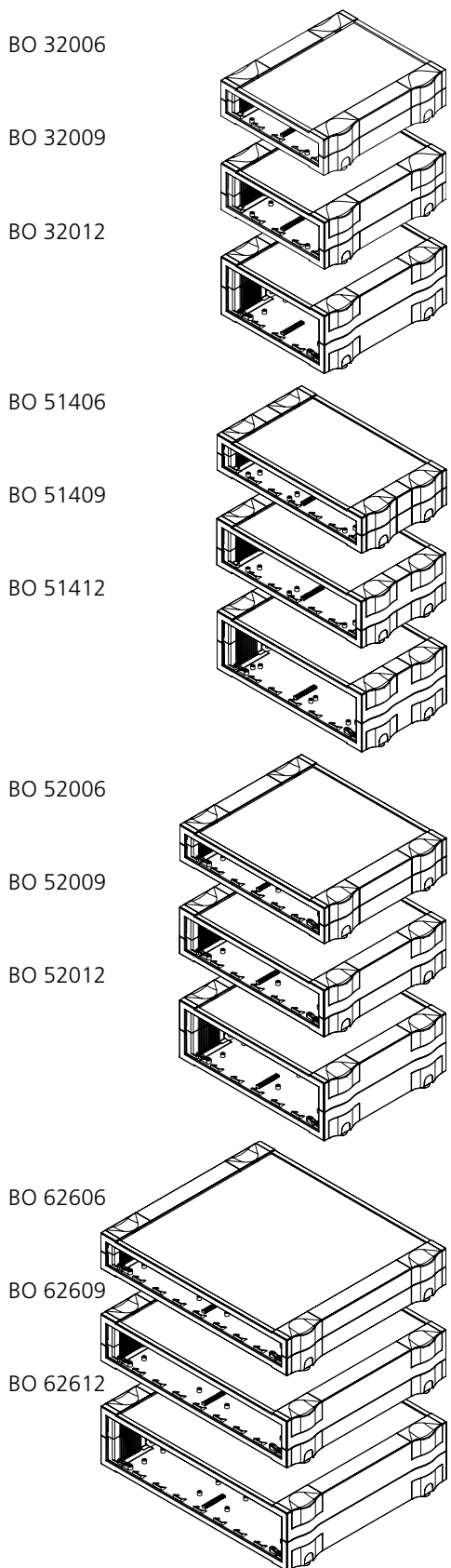
**Material:**

Enclosure: ABS

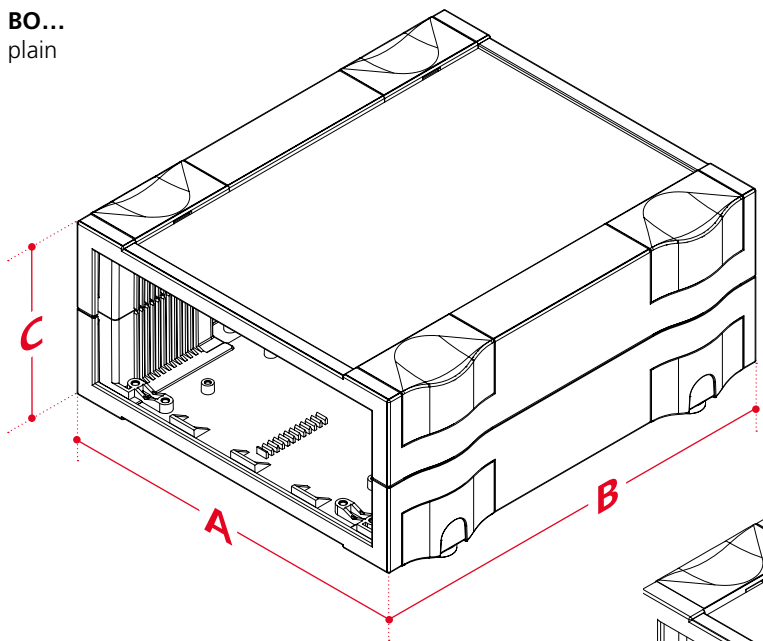
For details see technical information.



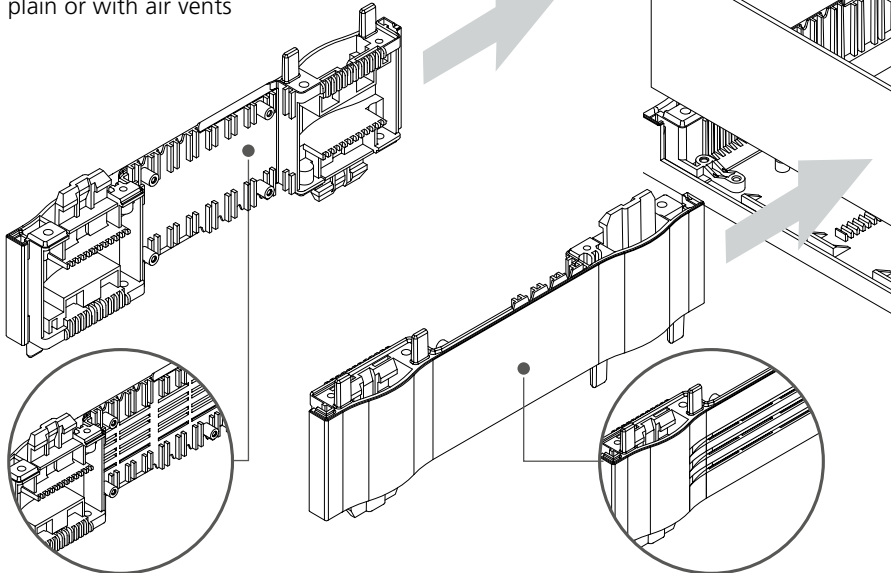
## Enclosure sizes



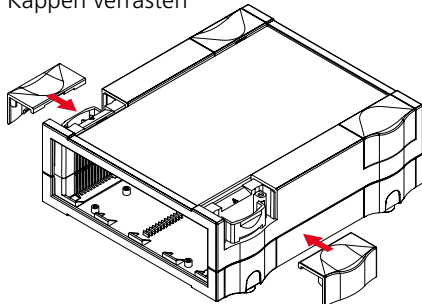
## Design types



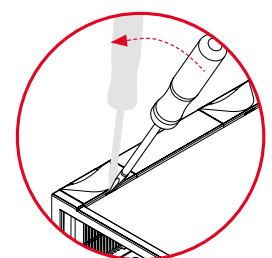
**Optional extension sets (9 HP)**  
plain or with air vents



Kappen verrasten



Release caps using slotted-head screwdriver

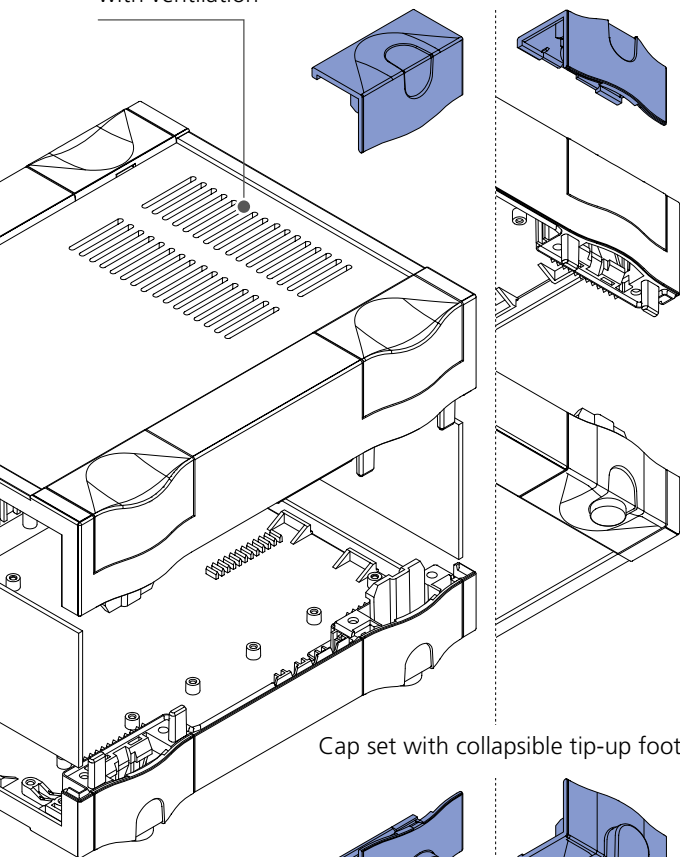


## Cap variants

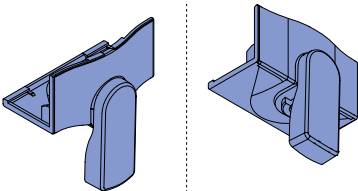
Top view      View from underneath

**BO...L**  
with ventilation

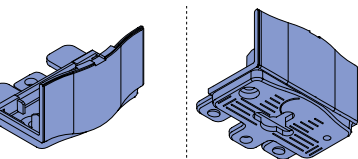
Cap set for desktop use



Cap set with collapsible tip-up foot



Cap set for wall mounting



## Cap colours



## Dimensions

Model	A	B	C*
BO 32006 (L)	174	196.9	49.96
BO 32009 (L)	174	196.9	65.2
BO 32012 (L)	174	196.9	80.44
BO 51406 (L)	240.68	136.9	49.96
BO 51409 (L)	240.68	136.9	65.2
BO 51412 (L)	240.68	136.9	80.44
BO 52006 (L)	240.68	196.9	49.96
BO 52009 (L)	240.68	196.9	65.2
BO 52012 (L)	240.68	196.9	80.44
BO 62606 (L)	307.35	256.9	49.96
BO 62609 (L)	307.35	256.9	65.2
BO 62612 (L)	307.35	256.9	80.44

\*C = the height can be increased in 9 HP steps (45.36 mm) by using the extension sets as required.

## Accessories



Angled front



Handle



Filling profile set for subrack, aluminium



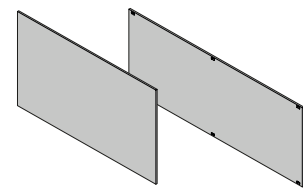
Profile set U



Design elements



Caps



Front and part front panels in different versions

# Botego

## Enclosure, plain

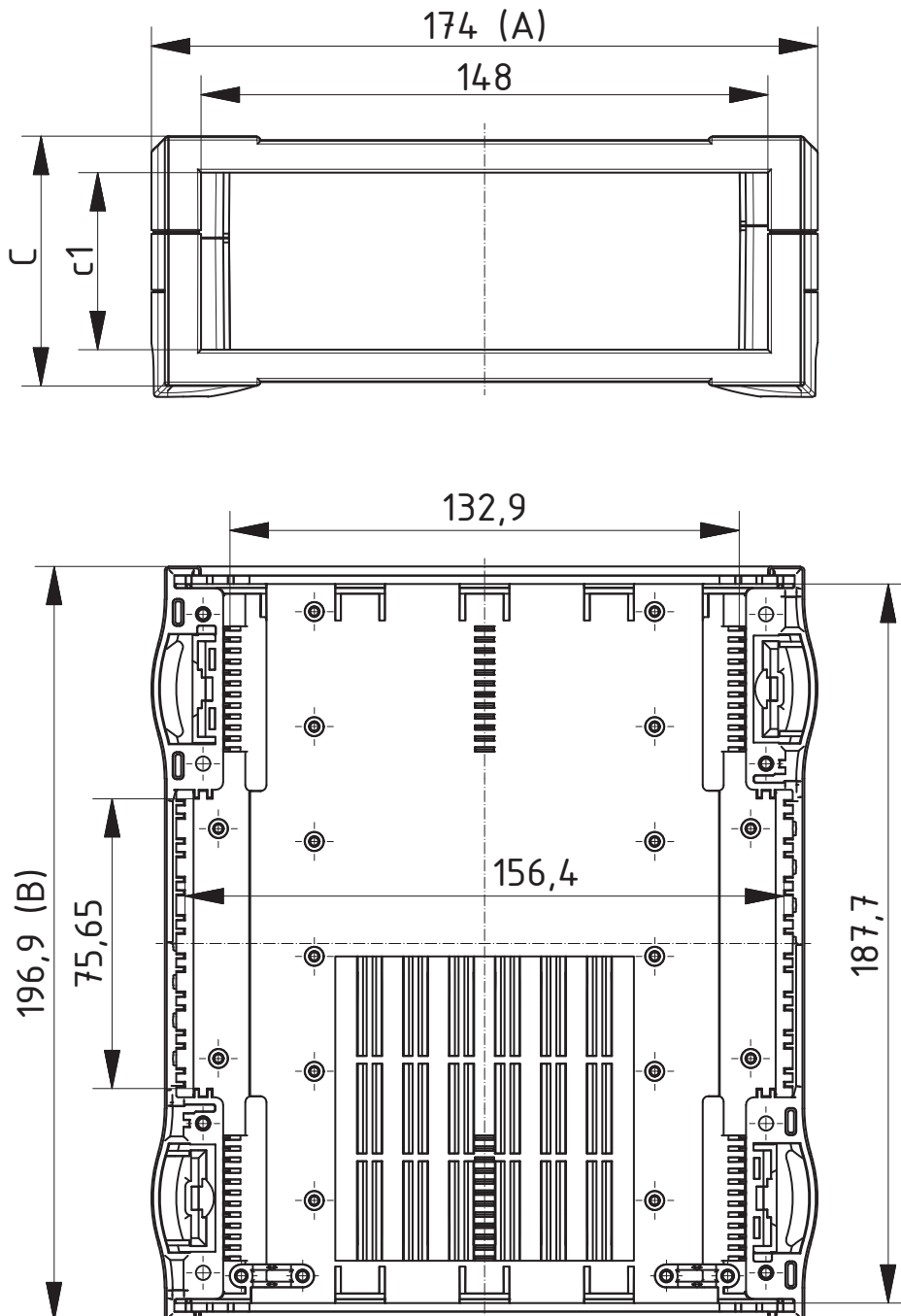


### BO 320..

Model	Order no.	A	B	C	c1	U	HP
BO 32006	68320060	174	196.9	49.96	31.28	3	6
BO 32009	68320090	174	196.9	65.2	46.52	3	9
BO 32012	68320120	174	196.9	80.44	61.76	3	12

Scope Of Delivery: 2 half-shells

Notes: Caps are not included in the scope of delivery.



Z-2803193

# Botego

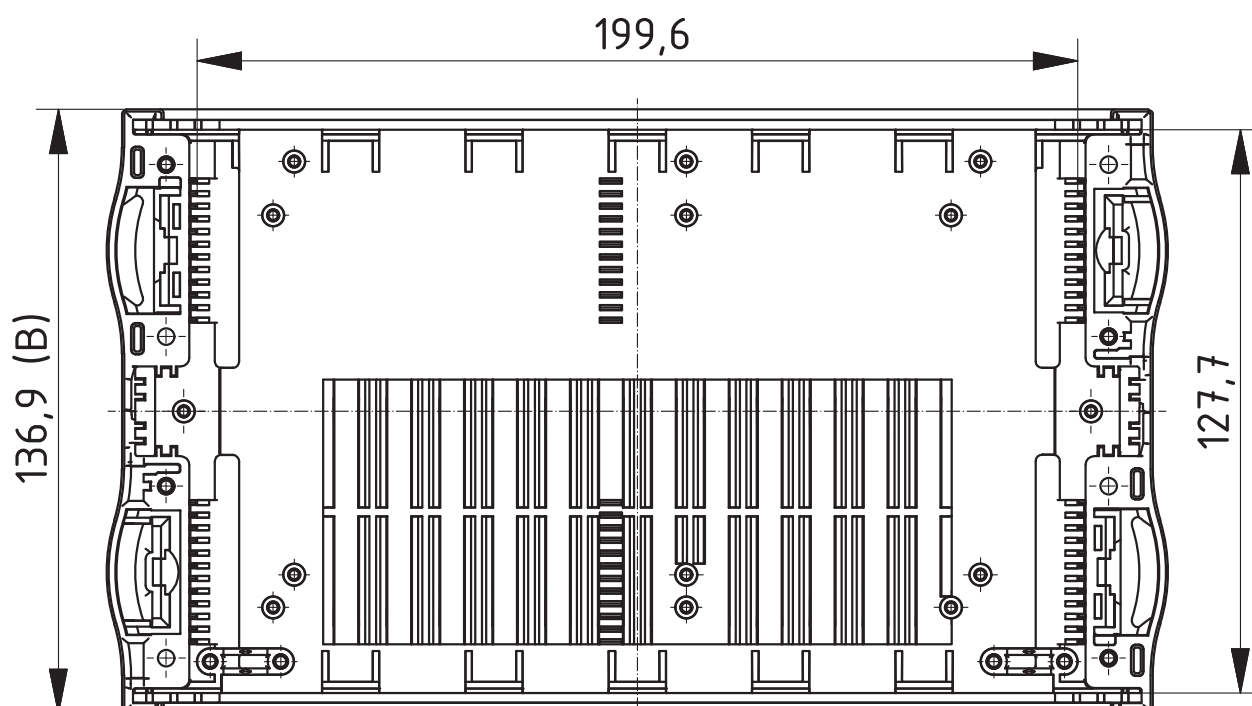
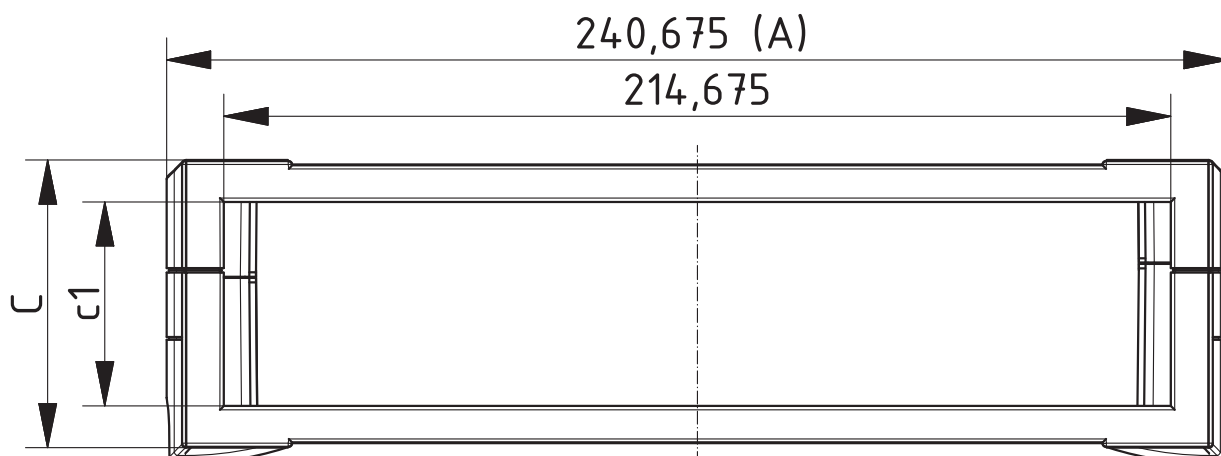
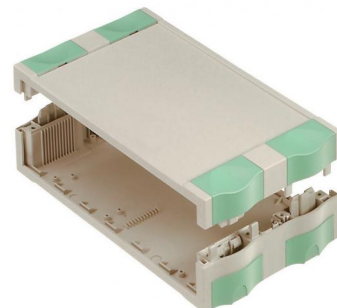
Enclosure, plain

## BO 514..

Model	Order no.	A	B	C	c1	U	HP
BO 51406	<b>68514060</b>	240.68	136.9	49.96	31.28	4.5	6
BO 51409	<b>68514090</b>	240.68	136.9	65.2	46.52	4.5	9
BO 51412	<b>68514120</b>	240.68	136.9	80.44	61.76	4.5	12

Scope Of Delivery: 2 half-shells

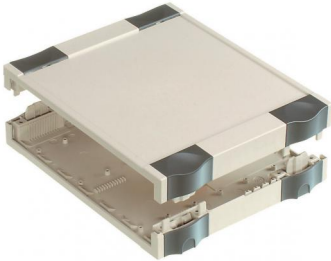
Notes: Caps are not included in the scope of delivery.



Z-2803194

# Botego

## Enclosure, plain

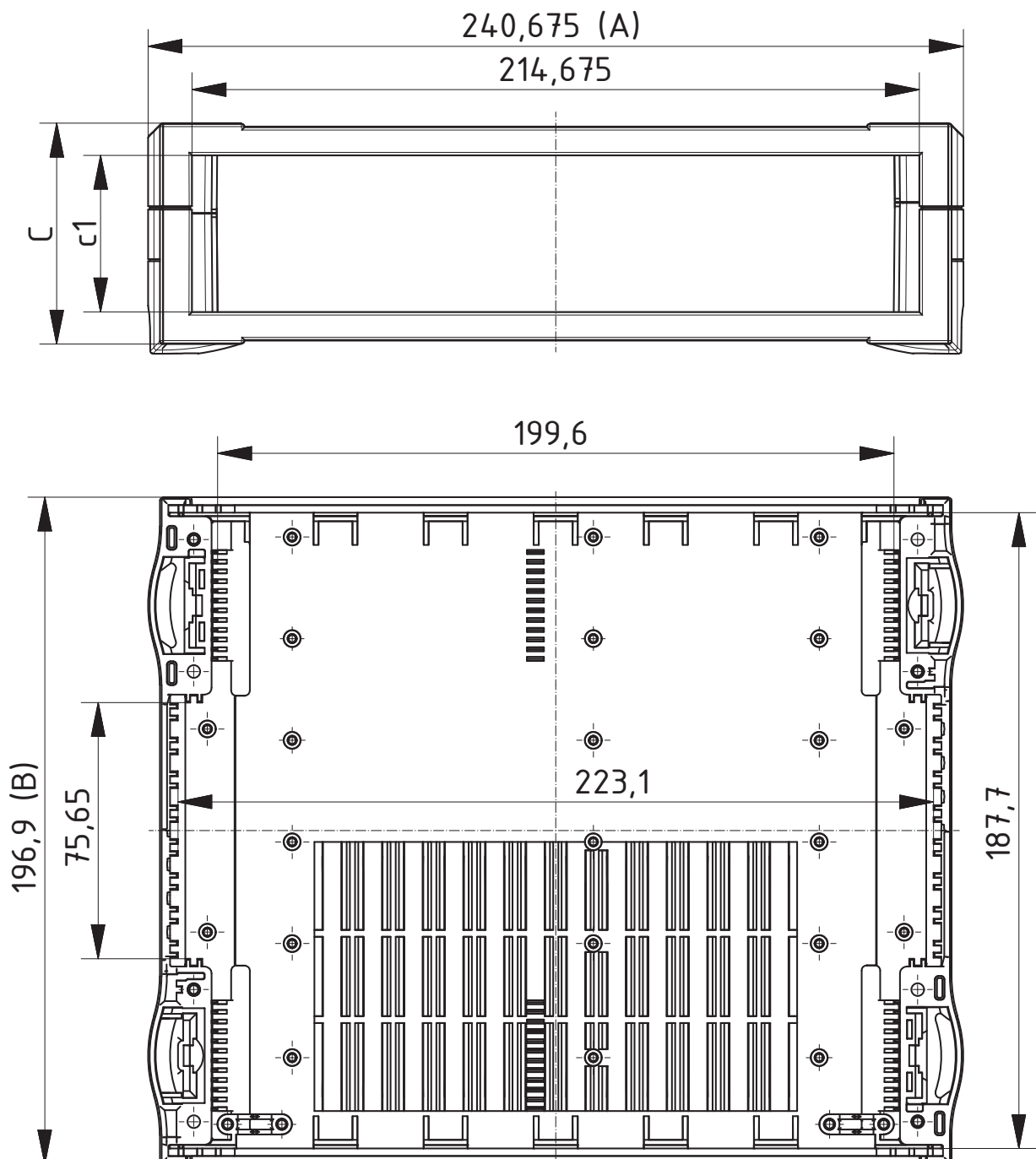


### BO 520..

Model	Order no.	A	B	C	c1	U	HP
BO 52006	68520060	240.68	196.9	49.96	31.28	4.5	6
BO 52009	68520090	240.68	196.9	65.2	46.52	4.5	9
BO 52012	68520120	240.68	196.9	80.44	61.76	4.5	12

Scope Of Delivery: 2 half-shells

Notes: Caps are not included in the scope of delivery.



Z-2803195



# Botego

## Enclosure, plain

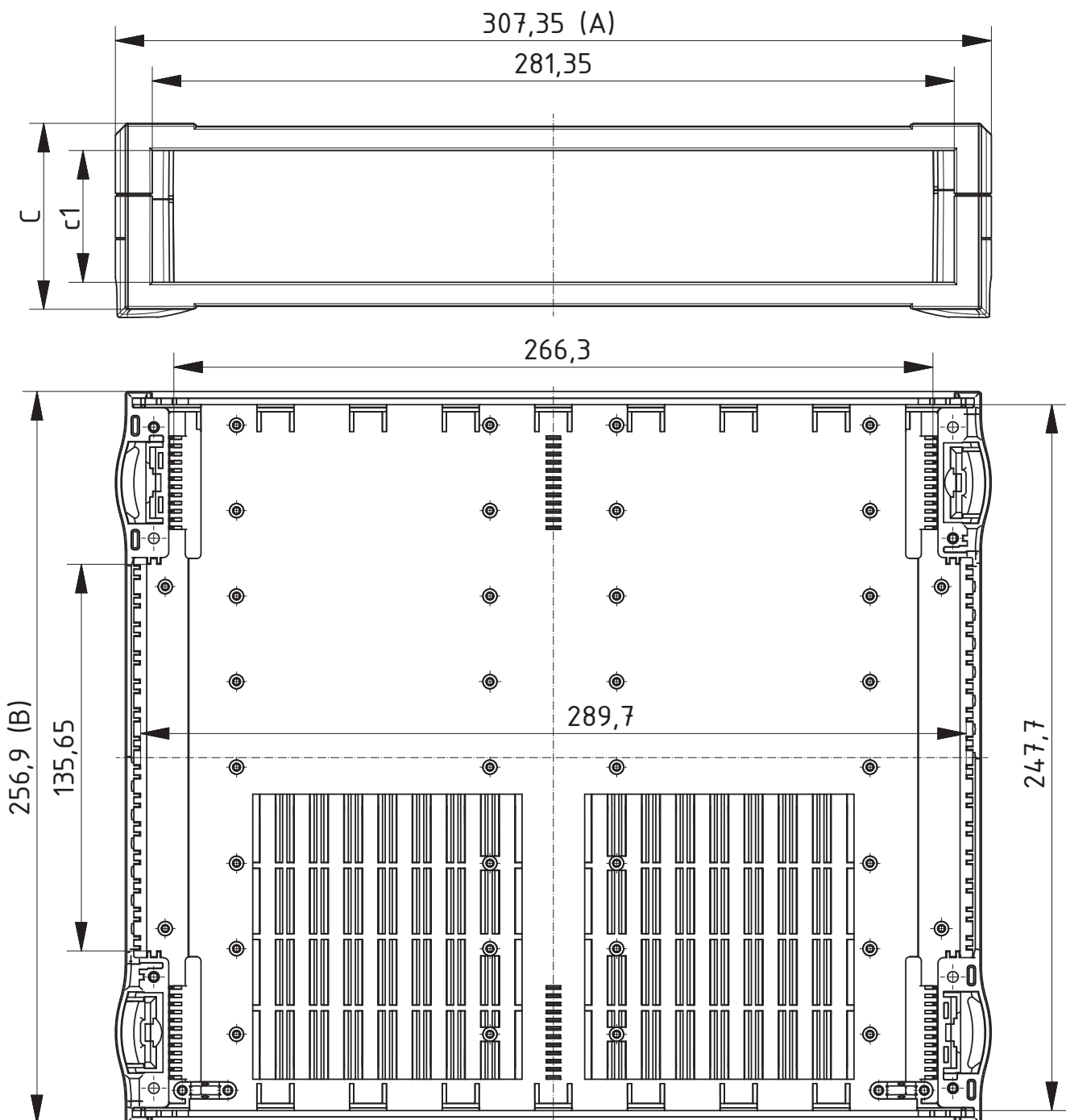
### BO 626..

Model	Order no.	A	B	C	c1	U	HP
BO 62606	<b>68626060</b>	307.35	256.9	49.96	31.28	6	6
BO 62609	<b>68626090</b>	307.35	256.9	65.2	46.52	6	9
BO 62612	<b>68626120</b>	307.35	256.9	80.44	61.76	6	12



Scope Of Delivery: 2 half-shells

Notes: Caps are not included in the scope of delivery.

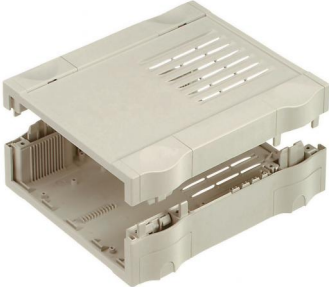


Z-2803196



# Botego

Enclosure with air vents in the lid and base

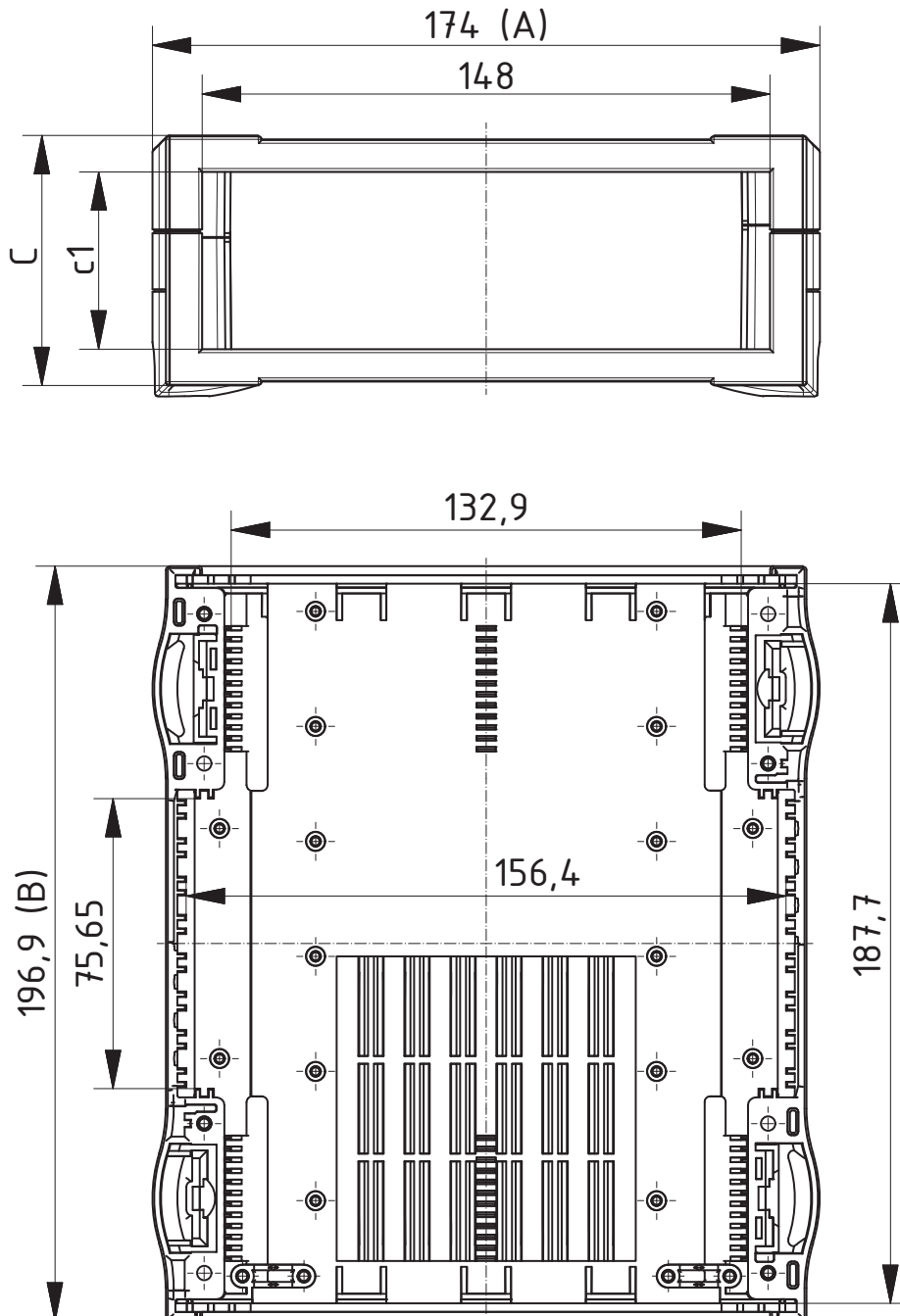


## BO 320.. L

Model	Order no.	A	B	C	c1	U	HP
BO 32006 L	68320061	174	196.9	49.96	31.28	3	6
BO 32009 L	68320091	174	196.9	65.2	46.52	3	9
BO 32012 L	68320121	174	196.9	80.44	61.76	3	12

Scope Of Delivery: 2 half-shells

Notes: Caps are not included in the scope of delivery.



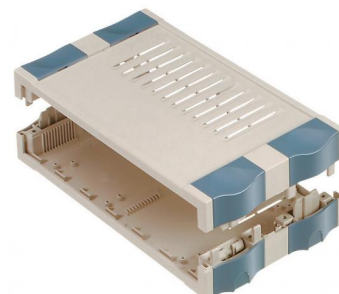
Z-2803193

# Botego

Enclosure with air vents in the lid and base

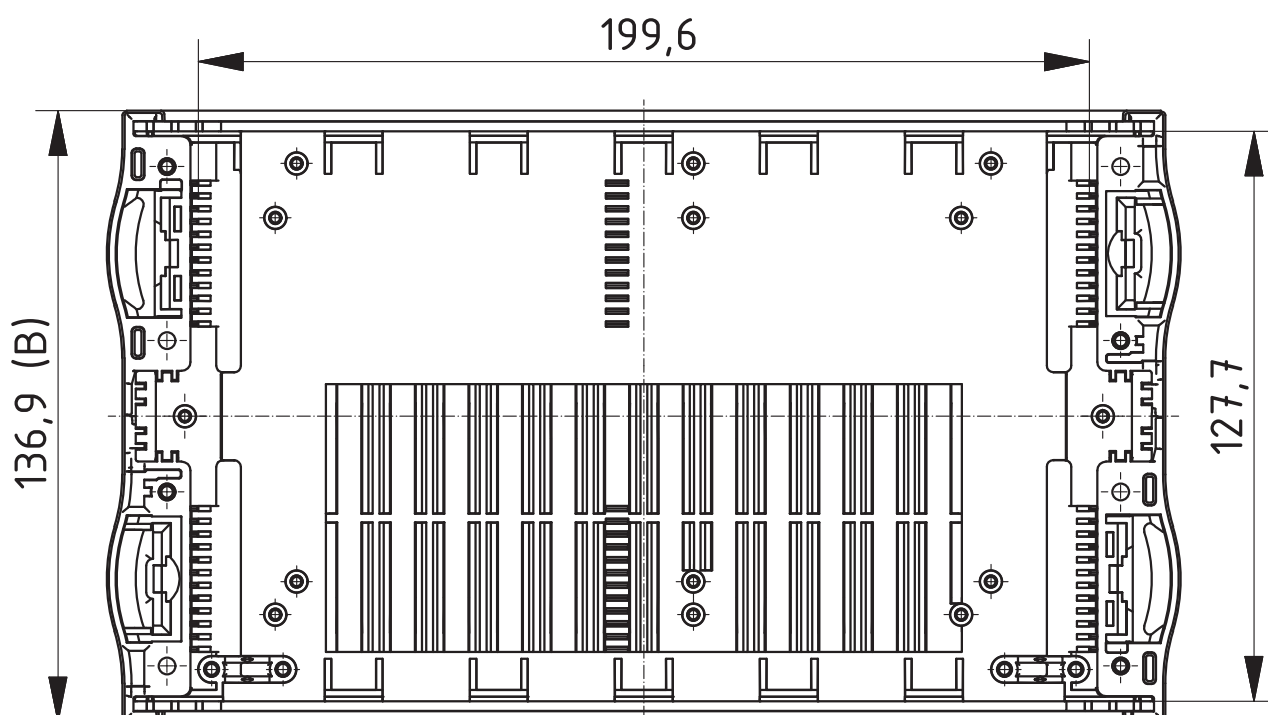
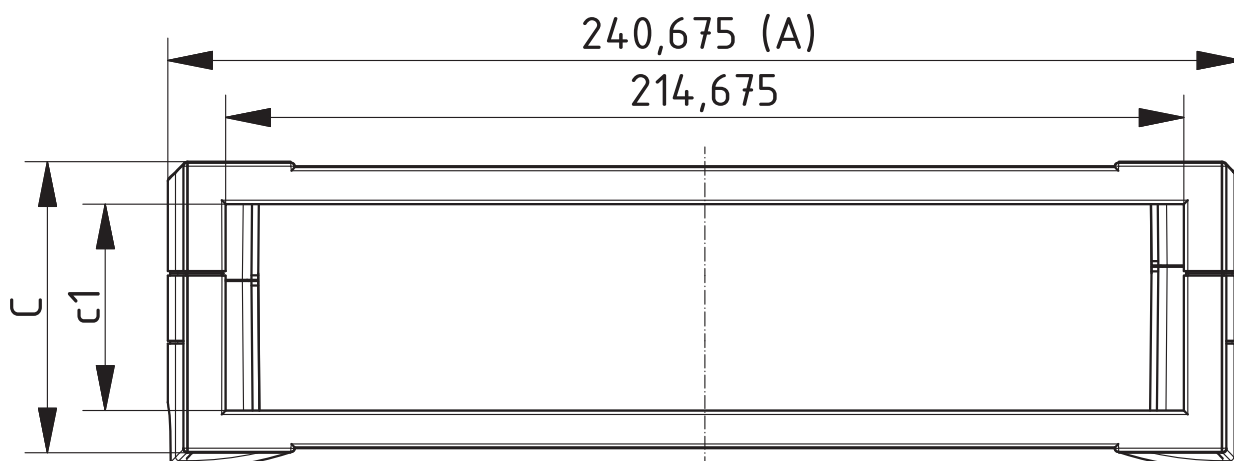
## BO 514.. L

Model	Order no.	A	B	C	c1	U	HP
BO 51406 L	<b>68514061</b>	240.68	136.9	49.96	31.28	4.5	6
BO 51409 L	<b>68514091</b>	240.68	136.9	65.2	46.52	4.5	9
BO 51412 L	<b>68514121</b>	240.68	136.9	80.44	61.76	4.5	12



Scope Of Delivery: 2 half-shells

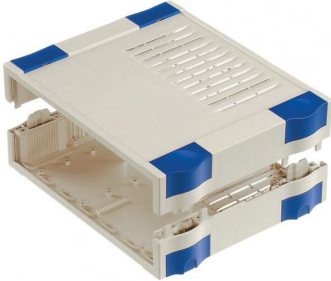
Notes: Caps are not included in the scope of delivery.



Z-2803194

# Botego

Enclosure with air vents in the lid and base

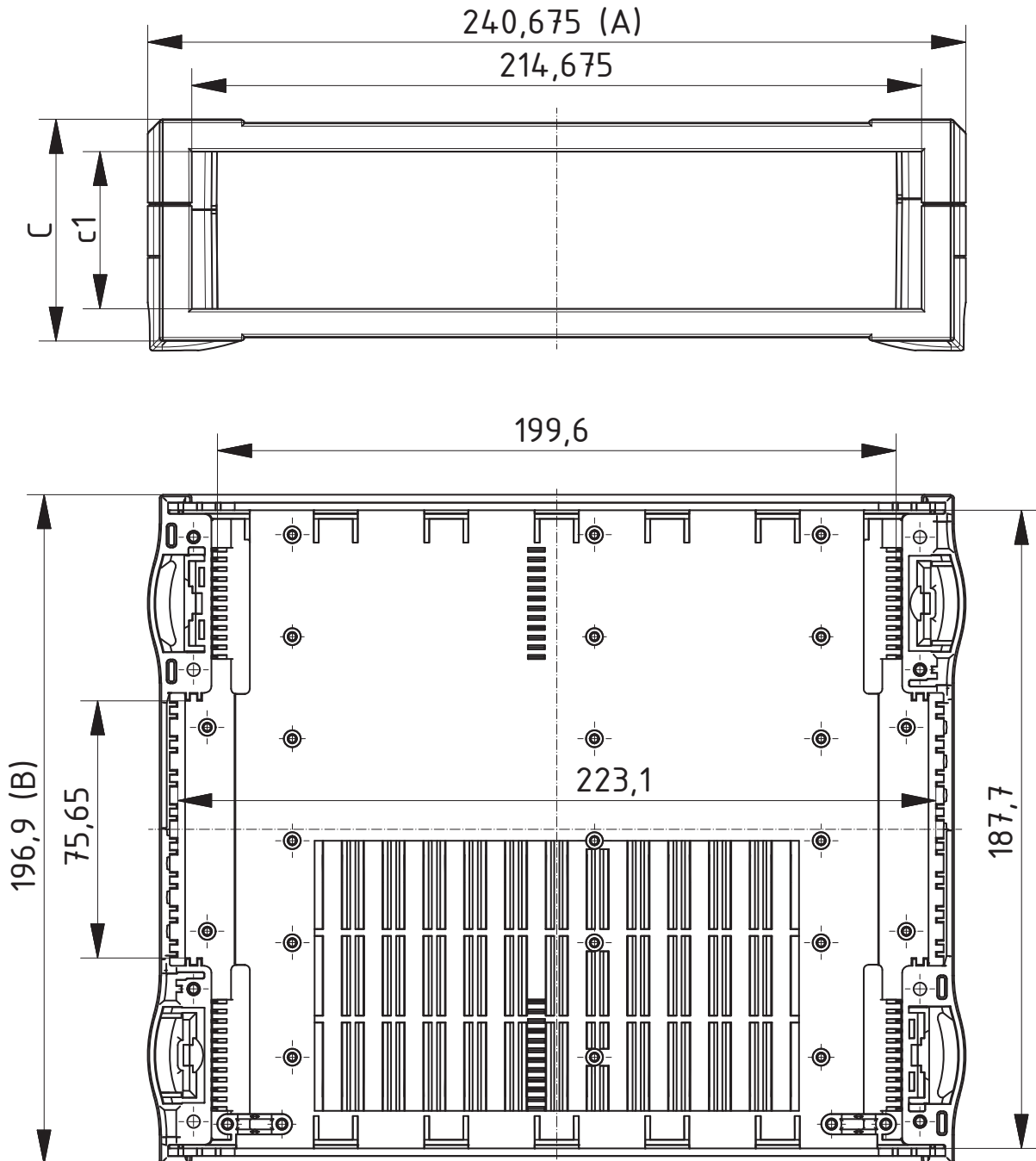


## BO 520.. L

Model	Order no.	A	B	C	c1	U	HP
BO 52006 L	68520061	240.68	196.9	49.96	31.28	4.5	6
BO 52009 L	68520091	240.68	196.9	65.2	46.52	4.5	9
BO 52012 L	68520121	240.68	196.9	80.44	61.76	4.5	12

Scope Of Delivery: 2 half-shells

Notes: Caps are not included in the scope of delivery.



Z-2803195

# Botego

Enclosure with air vents in the lid and base

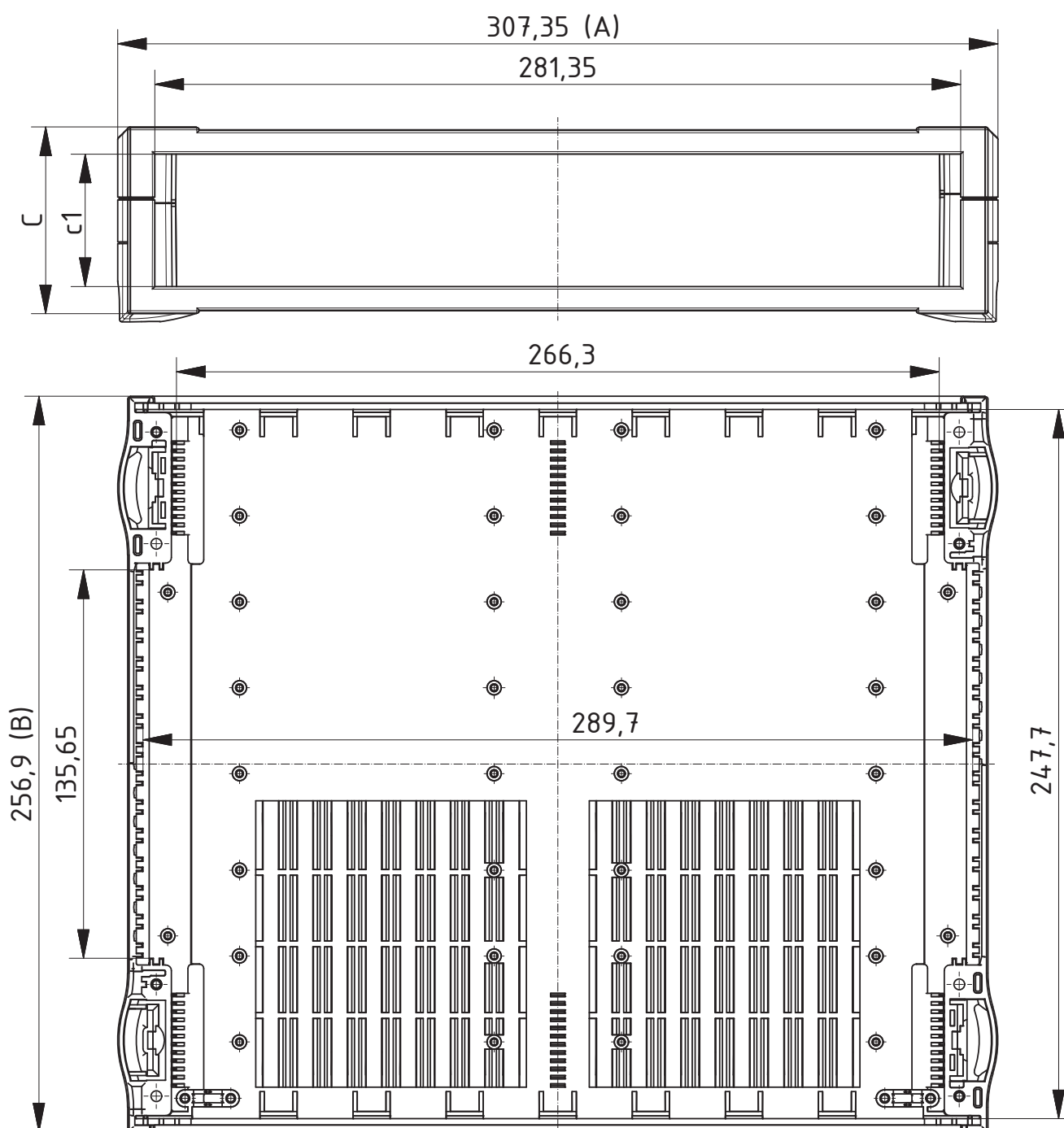
## BO 626.. L

Model	Order no.	A	B	C	c1	U	HP
BO 62606 L	<b>68626061</b>	307.35	256.9	49.96	31.28	6	6
BO 62609 L	<b>68626091</b>	307.35	256.9	65.2	46.52	6	9
BO 62612 L	<b>68626121</b>	307.35	256.9	80.44	61.76	6	12



Scope Of Delivery: 2 half-shells

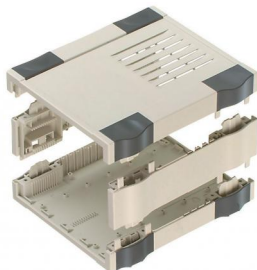
Notes: Caps are not included in the scope of delivery.



Z-2803196

## Botego

### Accessories



#### Extension sets, 9 HP, plain and with air vents (L)

Model	Order no.	HP	Colour	Note
BO AB 02009-7035	<b>68200910</b>	9	Light grey	For BO 320..(L), for BO 520..(L)
BO AB 02009 L-7035	<b>68200911</b>	9	Light grey	For BO 320..(L), for BO 520..(L)
BO AB 02609-7035	<b>68260910</b>	9	Light grey	For BO 626..(L)
BO AB 02609 L-7035	<b>68260911</b>	9	Light grey	For BO 626..(L)

**Scope Of Delivery:** 2 extension parts

**Notes:** L = With injection-moulded air vents

#### Table of enclosures, extension set AB 02609 (L) and front panel

Enclosures	Internal encl. Height TE clearance (H1)	Height TE	Number of AB 02609 (L)	Front panels to be used
BO 62606 (L)	31.28	6	-	BO FP 60006
BO 62609 (L)	46.52	9	-	BO FP 60009
BO 62612 (L)	61.76	12	-	BO FP 60012
BO 62606 (L)	77.00	15	1	BO FP 60015
BO 62609 (L)	92.24	18	1	BO FP 60018
BO 62612 (L)	107.48	21	1	BO FP 60021
BO 62606 (L)	122.72	24	2	BO FP 60024
BO 62609 (L)	137.96	27	2	BO FP 60027
BO 62612 (L)	153.2	30	2	BO FP 60030
BO 62606 (L)	168.44	33	3	BO FP 60033
BO 62609 (L)	183.68	36	3	BO FP 60036
BO 62612 (L)	198.92	39	3	BO FP 60039
BO 62606 (L)	214.16	42	4	BO FP 60042
BO 62609 (L)	229.4	45	4	BO FP 60045
BO 62612 (L)	244.64	48	4	BO FP 60048

# Botego

## Accessories

### Front panels, 2 mm, natural-coloured anodised aluminium

Model	Order no.	Note
BO FP 30006	<b>68711306</b>	For BO 32006 (L)
BO FP 30009	<b>68711309</b>	For BO 32009 (L)
BO FP 30012	<b>68711312</b>	For BO 32012 (L)
BO FP 30015	<b>68711315</b>	For BO 32006 (L) + 1x AB 02009 (L)
BO FP 30018	<b>68711318</b>	For BO 32009 (L) + 1x AB 02009 (L)
BO FP 30021	<b>68711321</b>	For BO 32012 (L) + 1x AB 02009 (L)
BO FP 30024	<b>68711324</b>	For BO 32006 (L) + 2x AB 02009 (L)
BO FP 30027	<b>68711327</b>	For BO 32009 (L) + 2x AB 02009 (L)
BO FP 30030	<b>68711330</b>	For BO 32012 (L) + 2x AB 02009 (L)
BO FP 30033	<b>68711333</b>	For BO 32006 (L) + 3x AB 02009 (L)
BO FP 30036	<b>68711336</b>	For BO 32009 (L) + 3x AB 02009 (L)
BO FP 30039	<b>68711339</b>	For BO 32012 (L) + 3x AB 02009 (L)
BO FP 30042	<b>68711342</b>	For BO 32006 (L) + 4x AB 02009 (L)
BO FP 30045	<b>68711345</b>	For BO 32009 (L) + 4x AB 02009 (L)
BO FP 30048	<b>68711348</b>	For BO 32012 (L) + 4x AB 02009 (L)
BO FP 50006	<b>68711506</b>	For BO 51406 (L); for BO 52006 (L)
BO FP 50009	<b>68711509</b>	For BO 51409 (L); for BO 52009 (L)
BO FP 50012	<b>68711512</b>	For BO 51412 (L); for BO 52012 (L)
BO FP 50015	<b>68711515</b>	For BO 52006 (L) + 1x AB 02009 (L)
BO FP 50018	<b>68711518</b>	For BO 52009 (L) + 1x AB 02009 (L)
BO FP 50021	<b>68711521</b>	For BO 52012 (L) + 1x AB 02009 (L)
BO FP 50024	<b>68711524</b>	For BO 52006 (L) + 2x AB 02009 (L)
BO FP 50027	<b>68711527</b>	For BO 52009 (L) + 2x AB 02009 (L)
BO FP 50030	<b>68711530</b>	For BO 52012 (L) + 2x AB 02009 (L)
BO FP 50033	<b>68711533</b>	For BO 52006 (L) + 3x AB 02009 (L)
BO FP 50036	<b>68711536</b>	For BO 52009 (L) + 3x AB 02009 (L)
BO FP 50039	<b>68711539</b>	For BO 52012 (L) + 3x AB 02009 (L)
BO FP 50042	<b>68711542</b>	For BO 52006 (L) + 4x AB 02009 (L)
BO FP 50045	<b>68711545</b>	For BO 52009 (L) + 4x AB 02009 (L)
BO FP 50048	<b>68711548</b>	For BO 52012 (L) + 4x AB 02009 (L)
BO FP 60006	<b>68711606</b>	For BO 62606 (L)
BO FP 60009	<b>68711609</b>	For BO 62609 (L)
BO FP 60012	<b>68711612</b>	For BO 62612 (L)
BO FP 60015	<b>68711615</b>	For BO 62606 (L) + 1x AB 02609 (L)
BO FP 60018	<b>68711618</b>	For BO 62609 (L) + 1x AB 02609 (L)
BO FP 60021	<b>68711621</b>	For BO 62612 (L) + 1x AB 02609 (L)
BO FP 60024	<b>68711624</b>	For BO 62606 (L) + 2x AB 02609 (L)
BO FP 60027	<b>68711627</b>	For BO 62609 (L) + 2x AB 02609 (L)
BO FP 60030	<b>68711630</b>	For BO 62612 (L) + 2x AB 02609 (L)
BO FP 60033	<b>68711633</b>	For BO 62606 (L) + 3x AB 02609 (L)
BO FP 60036	<b>68711636</b>	For BO 62609 (L) + 3x AB 02609 (L)
BO FP 60039	<b>68711639</b>	For BO 62612 (L) + 3x AB 02609 (L)
BO FP 60042	<b>68711642</b>	For BO 62606 (L) + 4x AB 02609 (L)
BO FP 60045	<b>68711645</b>	For BO 62609 (L) + 4x AB 02609 (L)
BO FP 60048	<b>68711648</b>	For BO 62612 (L) + 4x AB 02609 (L)



**Scope Of Delivery:** 1 front panel

**Notes:** Plastic front panels on request.

# Botego

## Accessories



### Cap set 1 for use as desktop enclosure

Model	Order no.	Colour
BO-KS 1-7035	68011000	Light grey
BO-KS 1-6027	68012000	Light green
BO-KS 1-7024	68013000	Graphite grey
BO-KS 1-5014	68014000	Dove blue
BO-KS 1-5002	68015000	Ultramarine blue
BO-KS 1-10788	68016000	Green translucent

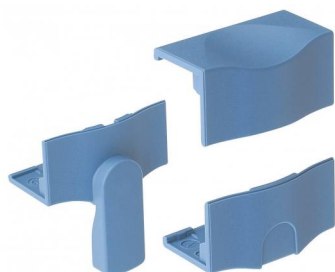
Scope Of Delivery: 4 upper caps, 4 lower caps, 4 rubber feet



### Cap set 2 for optimal stackability

Model	Order no.	Colour
BO-KS 2-7035	68021000	Light grey
BO-KS 2-6027	68022000	Light green
BO-KS 2-7024	68023000	Graphite grey
BO-KS 2-5014	68024000	Dove blue
BO-KS 2-5002	68025000	Ultramarine blue
BO-KS 2-10788	68026000	Green translucent

Scope Of Delivery: 8 lower caps, 4 rubber feet



### Cap set 3 with collapsible tip-up foot

Model	Order no.	Colour
BO-KS 3-7035	68031000	Light grey
BO-KS 3-6027	68032000	Light green
BO-KS 3-7024	68033000	Graphite grey
BO-KS 3-5014	68034000	Dove blue
BO-KS 3-5002	68035000	Ultramarine blue
BO-KS 3-10788	68036000	Green translucent

Scope Of Delivery: 4 upper caps, 2 lower caps, 2 foot caps with collapsible feet, 2 rubber feet



### Cap set 4 for wall mounting

Model	Order no.	Colour
BO-KS 4-7035	68041000	Light grey
BO-KS 4-6027	68042000	Light green
BO-KS 4-7024	68043000	Graphite grey
BO-KS 4-5014	68044000	Dove blue
BO-KS 4-5002	68045000	Ultramarine blue
BO-KS 4-10788	68046000	Green translucent

Scope Of Delivery: 4 upper caps, 4 wall-fixing caps, 4 rubber feet



### Angled operating front, 18 HP

Model	Order no.	Note
BO-SF-3 001800	68018003	For BO 32009 (L) + 1x BO AB 02009 (L)
BO-SF-5 001800	68018005	For BO 52009 (L) + 1x BO AB 02009 (L)
BO-SF-6 001800	68018006	For BO 62609 (L) + 1x BO AB 02609 (L)

Scope Of Delivery: 1 angled operating front



# Botego

## Accessories

### Handle

Model	Order no.	Note
BO HS 30000	<b>68430000</b>	For BO 320... (L)
BO HS 50000	<b>68450000</b>	For BO 514... (L); for BO 520... (L)
BO HS 60000	<b>68460000</b>	For BO 626... (L)

**Scope Of Delivery:** HS: Handle side parts (PA6), seals, screws HSP: profile (aluminium)

**Notes:** Processing of the enclosure on request. The maximum load is 300 N.



### Cable strain-relief set

Model	Order no.
BO-ZE	<b>68900040</b>

**Scope Of Delivery:** 10 strain relief brackets, 20 screws



### Set of screws

Model	Order no.	Note
BO-SHR Z KA35x10	<b>68900030</b>	For optional enclosure screwing

**Scope Of Delivery:** 40 screws



## Botego

### Accessories



#### Design element set 2

Model	Order no.	Colour	Note
BO-D2-6TE-7035	68120610*	Light grey	For BO FP...06
BO-D2-6TE-6027	68120620*	Light green	For BO FP...06
BO-D2-6TE-7024	68120630*	Graphite grey	For BO FP...06
BO-D2-6TE-5014	68120640*	Dove blue	For BO FP...06
BO-D2-6TE-5002	68120650*	Ultramarine blue	For BO FP...06
BO-D2-6TE-10788	68120660*	Green translucent	For BO FP...06
BO-D2-9TE-7035	68120910*	Light grey	For BO FP...09
BO-D2-9TE-6027	68120920*	Light green	For BO FP...09
BO-D2-9TE-7024	68120930*	Graphite grey	For BO FP...09
BO-D2-9TE-5014	68120940*	Dove blue	For BO FP...09
BO-D2-9TE-5002	68120950	Ultramarine blue	For BO FP...09
BO-D2-9TE-10788	68120960	Green translucent	For BO FP...09
BO-D2-12TE-7035	68121210*	Light grey	For BO FP...12
BO-D2-12TE-6027	68121220*	Light green	For BO FP...12
BO-D2-12TE-7024	68121230*	Graphite grey	For BO FP...12
BO-D2-12TE-5014	68121240*	Dove blue	For BO FP...12
BO-D2-12TE-5002	68121250*	Ultramarine blue	For BO FP...12
BO-D2-12TE-10788	68121260*	Green translucent	For BO FP...12
BO-D2-15TE-7035	68121510*	Light grey	For BO FP...15
BO-D2-15TE-6027	68121520	Light green	For BO FP...15
BO-D2-15TE-7024	68121530*	Graphite grey	For BO FP...15
BO-D2-15TE-5014	68121540	Dove blue	For BO FP...15
BO-D2-15TE-5002	68121550	Ultramarine blue	For BO FP...15
BO-D2-15TE-10788	68121560*	Green translucent	For BO FP...15
BO-D2-18TE-7035	68121810*	Light grey	For BO FP...18
BO-D2-18TE-6027	68121820	Light green	For BO FP...18
BO-D2-18TE-7024	68121830*	Graphite grey	For BO FP...18
BO-D2-18TE-5014	68121840*	Dove blue	For BO FP...18
BO-D2-18TE-5002	68121850*	Ultramarine blue	For BO FP...18
BO-D2-18TE-10788	68121860*	Green translucent	For BO FP...18

**Scope Of Delivery:** 2 design elements, fixing material

**Notes:** The necessary processing of the front panel takes place on request.

# Botego

## Accessories

### Design element set 3

Model	Order no.	Colour	Note
BO-D3-6TE-7035	<b>68130610*</b>	Light grey	For BO FP...06
BO-D3-6TE-6027	<b>68130620*</b>	Light green	For BO FP...06
BO-D3-6TE-7024	<b>68130630*</b>	Graphite grey	For BO FP...06
BO-D3-6TE-5014	<b>68130640*</b>	Dove blue	For BO FP...06
BO-D3-6TE-5002	<b>68130650*</b>	Ultramarine blue	For BO FP...06
BO-D3-6TE-10788	<b>68130660*</b>	Green translucent	For BO FP...06
BO-D3-9TE-7035	<b>68130910*</b>	Light grey	For BO FP...09
BO-D3-9TE-6027	<b>68130920*</b>	Light green	For BO FP...09
BO-D3-9TE-7024	<b>68130930*</b>	Graphite grey	For BO FP...09
BO-D3-9TE-5014	<b>68130940*</b>	Dove blue	For BO FP...09
BO-D3-9TE-5002	<b>68130950*</b>	Ultramarine blue	For BO FP...09
BO-D3-9TE-10788	<b>68130960*</b>	Green translucent	For BO FP...09
BO-D3-12TE-7035	<b>68131210*</b>	Light grey	For BO FP...12
BO-D3-12TE-6027	<b>68131220*</b>	Light green	For BO FP...12
BO-D3-12TE-7024	<b>68131230*</b>	Graphite grey	For BO FP...12
BO-D3-12TE-5014	<b>68131240*</b>	Dove blue	For BO FP...12
BO-D3-12TE-5002	<b>68131250*</b>	Ultramarine blue	For BO FP...12
BO-D3-12TE-10788	<b>68131260*</b>	Green translucent	For BO FP...12
BO-D3-15TE-7035	<b>68131510*</b>	Light grey	For BO FP...15
BO-D3-15TE-6027	<b>68131520*</b>	Light green	For BO FP...15
BO-D3-15TE-7024	<b>68131530*</b>	Graphite grey	For BO FP...15
BO-D3-15TE-5014	<b>68131540*</b>	Dove blue	For BO FP...15
BO-D3-15TE-5002	<b>68131550*</b>	Ultramarine blue	For BO FP...15
BO-D3-15TE-10788	<b>68131560*</b>	Green translucent	For BO FP...15
BO-D3-18TE-7035	<b>68131810*</b>	Light grey	For BO FP...18
BO-D3-18TE-6027	<b>68131820*</b>	Light green	For BO FP...18
BO-D3-18TE-7024	<b>68131830*</b>	Graphite grey	For BO FP...18
BO-D3-18TE-5014	<b>68131840*</b>	Dove blue	For BO FP...18
BO-D3-18TE-5002	<b>68131850*</b>	Ultramarine blue	For BO FP...18
BO-D3-18TE-10788	<b>68131860*</b>	Green translucent	For BO FP...18



**Scope Of Delivery:** 2 design elements, fixing material

**Notes:** The necessary processing of the front panel takes place on request.

### Filling profile set for subrack, aluminium

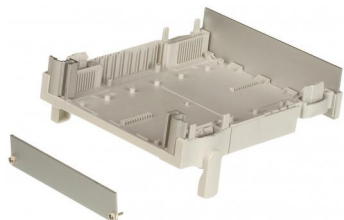
Model	Order no.	Note
BO-PB1-21	<b>68731210*</b>	Enclosure height 24 HP
BO-PB1-42	<b>68731420*</b>	Enclosure height 45 HP

**Scope Of Delivery:** 1 set = 2 pieces

**Notes:** For accessories, see Interzoll accessories chapter.



## Botego Accessories

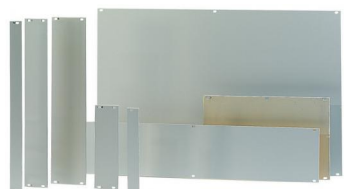


### Profile set TF

Model	Order no.	Note
BO-PT1-06	<b>68721060*</b>	For BO...06
BO-PT1-09	<b>68721090*</b>	For BO...09
BO-PT1-12	<b>68721120*</b>	For BO...12
BO-PT1-15	<b>68721150*</b>	For BO...06 + 1 x AB...
BO-PT1-18	<b>68721180*</b>	For BO...09 + 1 x AB...
BO-PT1-21	<b>68721210*</b>	For BO...12 + 1 x AB...
BO-PT1-24	<b>68721240*</b>	For BO...06 + 2 x AB...
BO-PT1-27	<b>68721270*</b>	For BO...09 + 2 x AB...
BO-PT1-30	<b>68721300*</b>	For BO...12 + 2 x AB...
BO-PT1-33	<b>68721330*</b>	For BO...06 + 3 x AB...
BO-PT1-36	<b>68721360</b>	For BO...09 + 3 x AB...
BO-PT1-39	<b>68721390*</b>	For BO...12 + 3 x AB...
BO-PT1-42	<b>68721420*</b>	For BO...06 + 4 x AB...
BO-PT1-45	<b>68721450*</b>	For BO...09 + 4 x AB...
BO-PT1-48	<b>68721480*</b>	For BO...12 + 4 x AB...

**Scope Of Delivery:** 2 profiles (aluminium), 2 tapped strips

**Notes:** \* = By inserting profiles and tapped stripes between the half-shells/extension sets, a screw-on front panel can be fitted to the enclosure.



### Part front panels, natural-coloured anodised aluminium, passivated on rear

Model	Order no.	a1	b1	U	HP	Note
TF/M 315	<b>86815033*</b>	-	-	3	-	
TF/M 324	<b>86824033*</b>	-	-	3	-	
TF/M 306	<b>86806033</b>	128.5	30.13	3	6	
TF/M 333	<b>86833033*</b>	-	-	3	-	
TF/M 336	<b>86836033*</b>	-	-	3	-	
TF/M 339	<b>86839033*</b>	-	-	3	-	
TF/M 312	<b>86812033</b>	128.5	60.61	3	12	
TF/M 345	<b>86845033*</b>	-	-	3	-	
TF/M 348	<b>86848033*</b>	-	-	3	-	
TF/M 318	<b>86818033</b>	128.5	91.09	3	18	
TF/M 606	<b>86806063</b>	-	-	6	6	
TF/M 609	<b>86809063</b>	-	-	6	-	
TF/M 612	<b>86812063</b>	-	-	6	12	
TF/M 321	<b>86821033</b>	128.5	106.33	3	21	
TF/M 615	<b>86815063*</b>	-	-	6	-	
TF/M 618	<b>86818063*</b>	-	-	-	18	6 U, 18 HP
TF/M 624	<b>86824063*</b>	-	-	6	-	
TF/M 342	<b>86842033</b>	128.5	213.01	3	42	
TF/M 630	<b>86830063*</b>	-	-	6	63	
TF/M 633	<b>86833063*</b>	-	-	6	63	
TF/M 636	<b>86836063*</b>	-	-	6	63	
TF/M 639	<b>86839063*</b>	-	-	6	63	
TF/M 645	<b>86845063*</b>	-	-	6	-	
TF/M 648	<b>86848063*</b>	-	-	6	-	
TF/M 642	<b>86842063</b>	261.85	213.01	6	42	

**Scope Of Delivery:** 1 front panel

**Notes:** For screw holder and screws for part front panels, see chapter about Interzoll Modul / Interzoll. Part front panels for BO 514.. / BO 520.. on request.



**BOPLA**

A Phoenix Mecano Company